

Chapter 11: Working with Photos

Photos are one type of object that you can add to your page. There is a *Photos Gallery* stocked with a variety of photos or you can easily add photos of your own to a page or to the gallery.

When you have a lot of photos on your page, you can make them into *Thumbnails*. A thumbnail is a small image that enlarges when you *click* on it. Instructions for thumbnails are in this chapter.

Another option is to create a slide show with all of your photos. Web Studio has several different slide shows to choose from. See the *Slide Shows* chapter.

There are several ways of putting photos on the page. Once they are inserted, you can position, crop, resize, and align them like any object.

The *Photos* group in the *Create* tab has many special effects that you can apply to photos.

There are commands to change the edges, texture, color, contrast, and other things. One of the most helpful commands for photos is found in the *Special Effects* drop down list. This is where you will find the *Photo Correction Wizard*. This dialog allows you to adjust the look of the photo and see the results in a *Preview* window.

Photos are a type of object. See the *Working with Objects* chapter for all of the things you can do to stack, crop, resize, move and align photos.



To check the download time: *Double-click* on a blank spot of the background to get the *Page Properties* dialog. *Click* on the *Size & Download Time* tab.

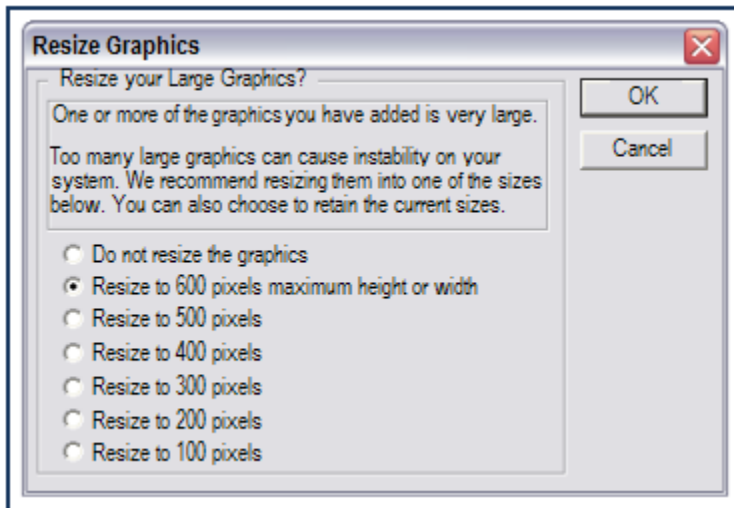
Resizing Photos and Graphics when Inserting Them on a Page

What are pixels?

PPI (pixels per inch) is a measurement of image resolution that defines the size of an image. The total pixel size of an image tells you how many pixels the image is made of. If you have a photo that is 1000x800, this means that the photo is 1000 pixels wide and 800 pixels high.

Resize Graphic dialog

When you insert a photo, Web Studio looks at the size of the photo. If the image is larger than 600 pixels in any direction, the *Resize Graphics* dialog automatically opens. The dialog provides you with several options for resizing, including an option to leave the photo the same size. If you plan on cropping most of the photo, you may not want to resize it. If you plan on making thumbnails of photos, you may want to choose a large image size to display when visitors *click* on the thumbnail. A reasonable size for a photo on a web page is 300 pixels.



When photos are larger than 800x600 pixels, Web Studio automatically resizes them proportionally so they fit in a browser window on an 800x600 screen. This ensures all visitors to your site will see your photos

Putting Photos on a Page

Use a photo from the gallery

- Click on the *Photos* tab to open the *Photos Gallery*.
- Find the photo that you want to use.
- *Drag and drop* the photo onto the page.

Add your own photos to the Photos Gallery

See the *Galleries* chapter for all the ways that you can add objects to galleries. Here is a quick review of some of the ways to add your own photos to the *Photos Gallery*:

1. *Right-click* over a photo in the gallery. Choose *Add files*. In the *Open* dialog, choose the file and *click Open*.



If the *Resize Graphics* dialog appears, it is because your photo is very large. Choose to resize the photo to 300 pixels or less.

2. Place a photo on the page. Hold down the *ctrl+shift* keys. *Drag and drop* the photo into the gallery.
3. Place a photo on the page. *Right-click* over the photo; choose *Copy* from the *Selected Objects Menu*. *Right-click* over a spot in the gallery. Choose *Paste*.
4. *Drag* a photo's file from its Windows folder directly into the gallery.

Insert photos from a file

- *Click* on *Insert > Illustrations > >Picture from File*. The *Open* dialog appears.
- *Select* the photo's file and *click Open*.
- If the photo is **smaller** than 600 pixels in both directions, the photo is added to the page.
- If the photo is **larger** than 600 pixels in either direction, the *Resize Graphics* dialog opens.
- If you want to insert the photo in its full size, choose *Do not resize the graphics*. If you want the photo smaller, choose one of the other sizes. Remember, large photos can slow the download times for visitors. A reasonable size for a photo is 300 pixels.
- *Click OK* and the photo is added to the page.

Add photos from digital cameras

Web Studio is compatible with virtually all digital cameras. It will accept photos directly from cameras that act like a disk drive. Since most digital cameras appear to be like disk drives when they connect to the computer, adding photos is like adding any image from a file. The photos on your camera are usually quite large—too large for a web page. Web Studio automatically identifies large photos and opens a dialog so you can resize them before you insert them onto a page.

- *Click* on *Insert > Illustrations > Insert Picture*. The *Open* dialog opens.
- Choose the photo's file and *click Open*.
- If the photo is **smaller** than 600 pixels in both directions, the photo is added to the page.
- If the photo is **larger** than 600 pixels in either direction, the *Resize Graphics* dialog opens. If you want to insert the photo in its full size, choose *Do not resize the graphics*. If you want the photo smaller, choose one of the other sizes. A reasonable size for a photo is 300 pixels.
- *Click OK*. The photo is added to the page.

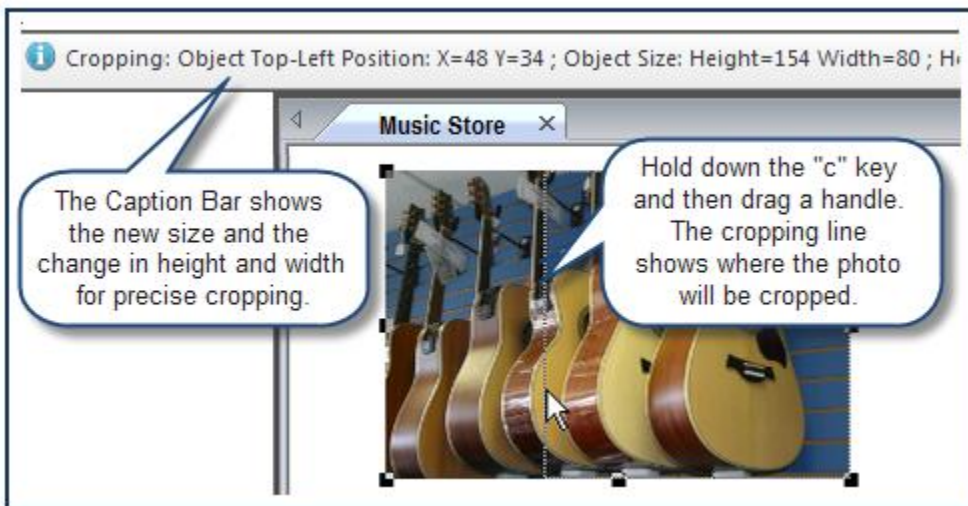
Working with Photos

You can *crop*, *select*, *resize*, *stack*, *align*, and *group* photos in the same way that you work with other objects. See *Working with Objects*. This is a quick review of resizing and cropping.

Crop the top, bottom and sides

When you crop, a portion of the image is trimmed off. A cropping line visually indicates where the image will be cropped. In addition, the *Caption Bar* at the top of page displays the new size of the image and the amount of change in the width and the height. This enables you to perform precision cropping.

- *Select* the photo to be cropped.
- *Press* and hold the *C* key—you do not need to *press* the *shift* key
- Move the mouse over a **side** handle.
- *Drag* to crop. As you *drag* you will see a cropping rectangle that indicates what portion of the graphic will be cropped and *deleted*.
- Release the mouse while still holding the *C* key to crop the graphic.



Resize a photo using selection handles

- *Click* to *select* the photo.
- Move the mouse over a handle until it turns into a two way arrow.
- *Drag* a corner handle to make the photo get larger or smaller proportionally.
- *Drag* a side, top, or bottom handle to make the object larger or smaller in one direction.
- Hold down the *shift* key and use the corner handle to resize in any direction.

Resize a photo numerically

- *Double-click* over the object to bring up the *Object Properties* dialog or *right-click* over an object and choose *Properties* from the *Selected Object Menu*.
- To resize non-proportionally, fill in a *Height* and *Width*.
- To resize proportionally, check the *Proportional Resizing* box and then fill in a *Height* or *Width*.
- *Click OK* when you are done.

Changing and Enhancing Photos

The *Photos* group in the *Insert* tab contains several *Special Effect* commands that you can apply to photos. To use these effects, first *select* the photo or group of photos and then *click* on the command. You can *click* on a command more than once to repeat the effect. For instance, you can *click* on the *Lighten* command more than once to continue to lighten the photo. You can experiment by applying more than one effect to a photo. If you do not like the way it looks, *click* the *Undo* command or *ctrl+z* to undo the change. These effects work on graphic and text objects too.

Use the Photo Correction Wizard

The *Photo Correction Wizard* is the most versatile way to enhance photos.

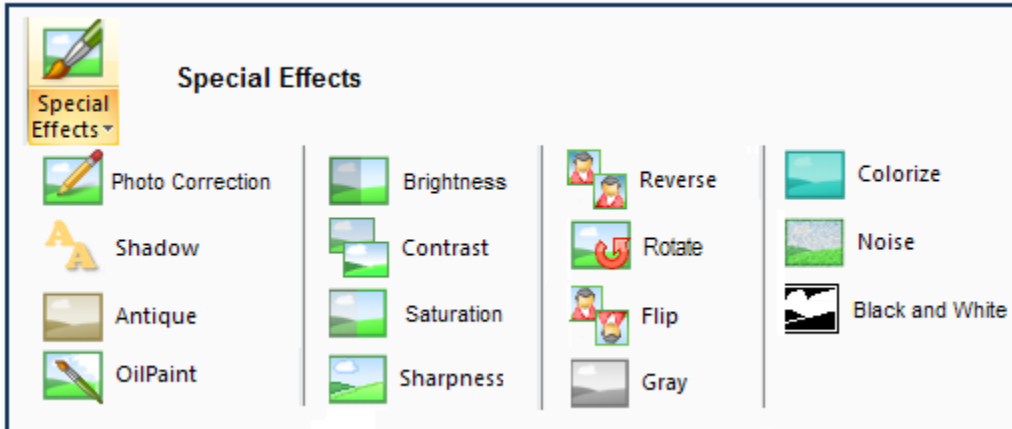
- *Select* a photo or group of photos you want to change. Remember to hold down the *shift* key when *selecting* more than one photo.
- *Click on Create > Photos > Special Effects>Photo Correction*. The *Photo Correction Wizard* opens.



- Click on the *Next* button to advance to the *Automatic Correction* page.
- Click the *Give It A Try* button. This automated enhancement attempts to correct brightness, contrast, and color saturation for any photo. It works best with photos with low contrast and low brightness. The *Preview* displays the change. Click *Undo* if you do not like the way it looks.
- Click the *Next* button to advance to the other screens. Use the sliders to adjust the
 - Brightness and Contrast*
 - Hue (color)*
 - Saturation*
 - Sharpness*
- Click the *Back* button to go back and make changes.
- Click the *Cancel* button to discard the changes.
- Click the *Finish* button when you are done.

Use the other Special Effects commands

Beside the *Photo Correction Wizard*, there are other *Special Effects* commands that you can use to change the look of photos and other graphics. You can apply more than one special effect to a graphic and repeat the same effect to enhance the results. The following is a list of *Special Effects* commands:



- Click to *select* a photo or group of photos.
- Click on *Create > Photos > Special Effects>desired* command to apply the effect.
- If you do not like the effect, *click* the *Undo* command or *ctrl+z*.
- Apply as many effects as you like to the photo.

Hold down the *shift* key to *select* more than one photo.



Shadow Effect. If the page has a solid color background, Web Studio “anti-aliases” the shadow to the background color. If you change the background color, you may need to redo the shadow. If the page has a graphic background, the shadow will look better if you make it on a closely matching solid background first and then place it on the page.

Change the opacity of photos and graphics

- Click to *select* a photo or graphic.
- Click on the *Create* tab.
- Go to the *Opacity* group.
- Use the *Graphic Opacity* slider to increase or decrease the opacity of the photo.

Apply textures and edges to photos and graphics

The *Photos* group has many edges and textures that you can put on a photo.

- *Select* a photo or graphic.
- Click on *Create > Photos > Photo Edges* or *Photo Textures*.
- Click on the edge or texture that you want to apply to the photo.

Using Photos to Make Rollover Buttons

You can use photos to make interesting rollover buttons. The *Buttons* chapter has complete instructions for making graphic rollover buttons. This is a quick review.

- Place three graphics on the page. Use a photo for one or all of the graphics.
- *Select* them in the order that you want them to appear—normal, mouse over, and mouse down. Remember to hold down the *shift* key while you *select* all three.
- Click on *Create > Rollovers > Graphic Rollovers*. This opens the *Graphic Rollover Button Studio*.
- Fill in the *Button Text*.
- Click the *Font* and *Color* buttons to change the font style and font color of the text.
- Click *OK* when you are finished.
- To see the button in action, click *Page > Preview > Preview Page*.

Creating Thumbnails

Thumbnails are used to create a small image of a photo that has an automatic link to the full sized photo. When the thumbnail is *clicked* on the web, the full size photo is displayed in a new browser window.

Create a thumbnail

- *Select* a photo (or multiple photos).
- Make it the size that you want it to be when the thumbnail is *clicked*.
- *Click* on *Create > Photos > Thumbnails*. This opens the *Thumbnail Studio*.



- Fill in the following information:

Thumbnail Size and Display. This is the size of the thumbnail on the page. It is not the size of the full image. The size of the full image is the same size as the image before it is made into a Thumbnail.

Caption. This is what is displayed on the page when a visitor moves the mouse over the thumbnail. It also appears below the full size image in the pop-up window. You can use the default message or key in one of your own or *delete* the message entirely. Use the buttons to choose Font, Text Color and Fill Color.

Copy Protect. Check the *Copy Protect Full Size Image* if you want to prevent someone from copying your image from the internet. Technically, a visitor can *right-click* over your image and copy it. However, when they paste it, the image is so tiny, they cannot use it.

- Click *OK* when you are done.
- Click any *Preview Page* command on the *Home* tab or *Page* tab to see the thumbnail in action.
- In *Preview*, click on the thumbnail to see the enlargement.

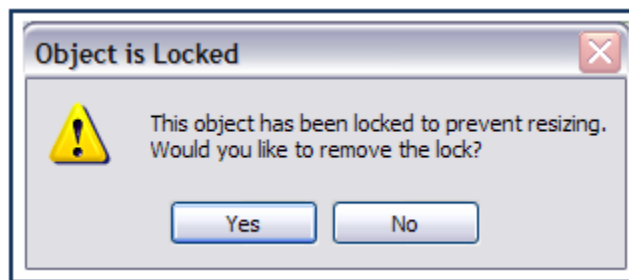
Resize a thumbnail

When you create a thumbnail, the size is locked unless you unlock it. Once you unlock it, you can resize it.

- Click on the thumbnail to *select* it.
- Drag one of the handles and the *Object is Locked* dialog opens.
- Click *Yes* if you want to remove the lock so that you can resize the photo.



If you choose *No*, your thumbnail is locked to the current size. If you want to change the size, *double-click* over the thumbnail to re-open the *Thumbnail Studio*. Make your size change and then click *OK*.

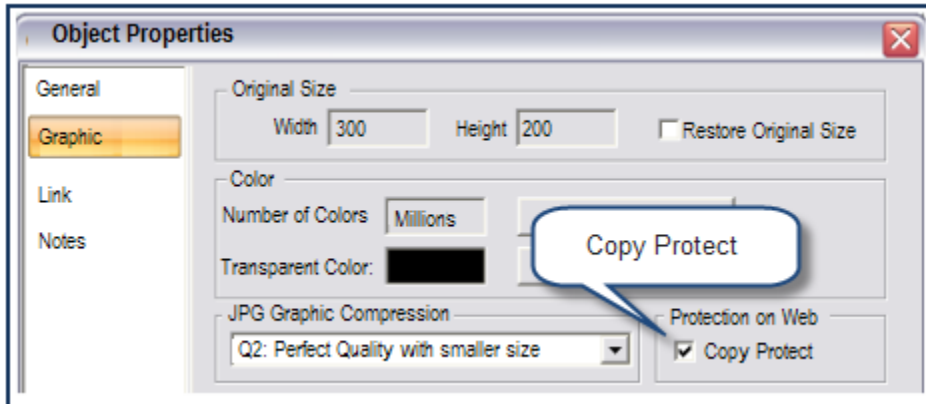


Copy Protecting Photos

Web Studio automatically places copy protection on your photos. Technically, a visitor can attempt to *right-click* over your image and copy it. However, when they paste it, the image is a tiny white graphic that is of no use. If you want to allow visitors to copy your photos, turn off the option in the *Object Properties* dialog. The *Thumbnail* dialog also has a *Copy Protect* field.

Turn Copy Protect off and on

- *Right-click* over the photo.
- Choose *Properties* from the *Selected Object Menu*. This opens the *Object Properties* dialog.
- Click on the *Graphics* tab.



- Uncheck the *Copy Protect* field in the *Protection on Web* section to turn off the feature. Check the box to turn it back on.
- Click *OK*.

Using Photos to Make Rollover Buttons

You can use photos to make interesting rollover buttons. The *Buttons* chapter has complete instructions for making graphic rollover buttons. This is a quick review.

- Place three graphics on the page. Use a photo for one or all of the graphics.
- *Select* them in the order that you want them to appear—normal, mouse over, and mouse down. Remember to hold down the *shift* key while you *select* all three.
- Click on *Create > Rollovers > Graphic Rollovers*. This opens the *Graphic Rollover Button Studio*.
- Fill in the *Button Text*.
- Click the *Font* and *Color* buttons to change the font style and font color of the text.
- Click *OK* when you are finished.
- To see the button in action, click *Page > Preview > Preview Page*.