

Chapter 12: Color and Shapes

There is no limit to the number of shapes and graphics that you can use on your website. Within Web Studio, the *Graphic Gallery* contains a variety of readymade graphic objects and the *Draw* tab contains several shape tools for you to create your own graphics.

Color is a very important design feature of your website. The color often sets the tone of the site and makes the site enjoyable to visit. The color tools enable you to use an unlimited number of colors in your website. Since many of the lines, shapes, links, background, and text commands contain a *Colors* dialog, let's look at color first.

Working with Color

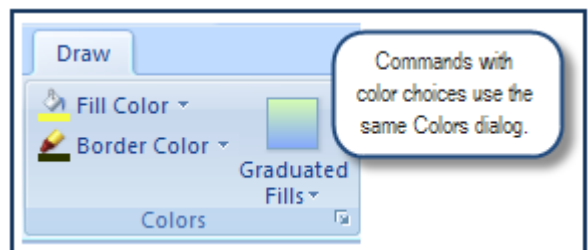
Web Studio has two features that work with color: the *Colors* dialog and the *Change Color* command.

Colors dialog. The *Colors* dialog is used to choose color for borders, shapes, links, backgrounds, text, and any command that has a color choice. This dialog opens automatically when you *click* on one of the *Color* commands. You can choose from some standard colors or create customized colors of your own. The *Colors* dialog is always associated with a command.

Change Color command. The *Change Color* command in the *Create* tab enables you to change the color on any graphic object that was not created using the *Colors* dialog. The *Change Color* command uses sliders that change the *Hue*, *Luminosity*, and *Saturation* of the object's color. Together with the *Colors* dialog, the color commands give you the ability to customize color on any graphic on your page. You can even use it to change the color scheme of templates. See the *Templates* chapter for how to change template colors.

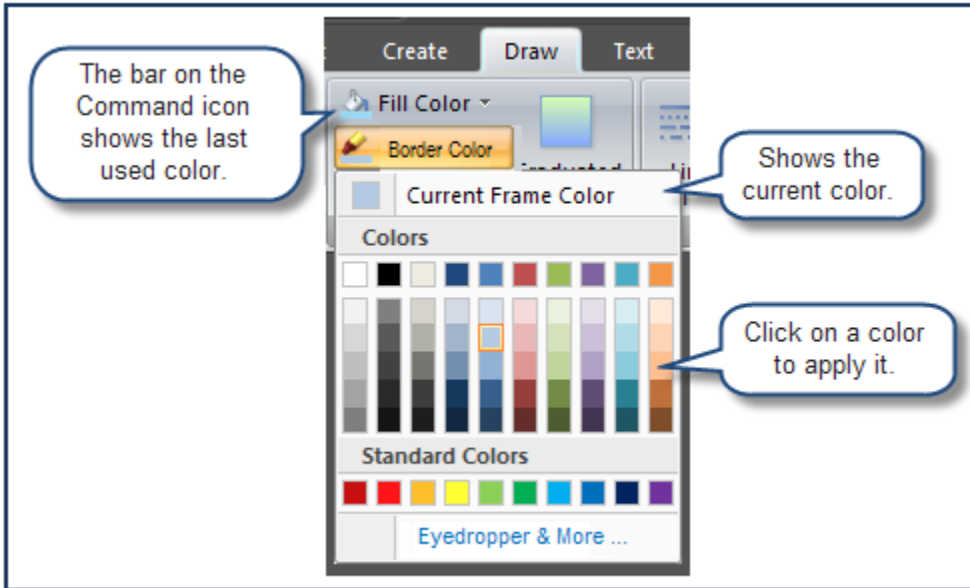
Using the Colors Dialog

When you *click* on a command that uses color, the *Colors* dialog is the first window that opens. This window has a choice of colors that you can use. The *Eyedropper & More* command provides you with unlimited custom color choices. Commands that have color choices use the same *Color* dialog.



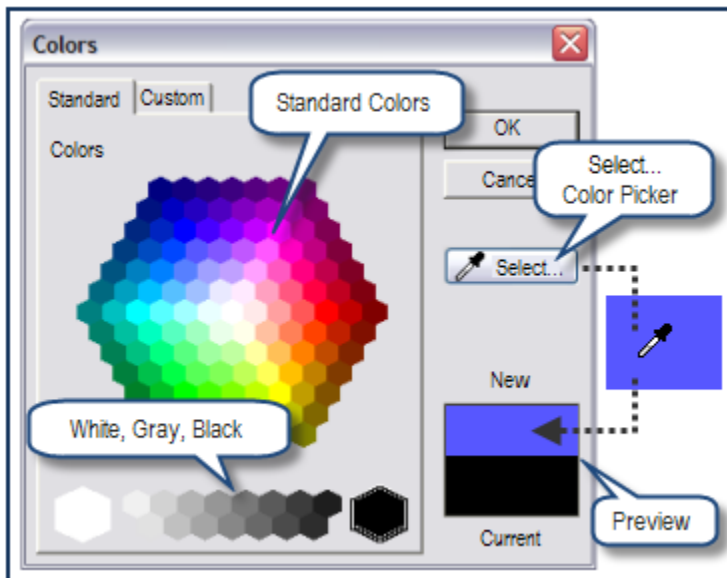
Choose basic colors in the first window

- Click on any shape, border, background, or text command that provides you with a color choice. The *Color* dialog opens.



- The color bar at the bottom of an icon shows the last color chosen for that command.
- If you want to use one of the colors in this window, *click* on the color. The color is then applied to the shape, border, link, background, or text.
- Click on *Eyedropper & More* to choose more color options. This opens the *Colors Standard* and *Colors Custom* dialogs.

Choose standard or custom colors from Eyedropper & More Colors dialog Standard tab



New and Current. This window displays the current color of the object and the new color that will be applied if you *click* OK. The *Current* color defaults to black when you are choosing a color for a new object. When you are changing a color, it displays object's current color. The *New* section displays the color that you are choosing in the *Colors* dialog. When you *click* OK, this is the color that is applied to the object.

Colors. This section contains some *Standard* colors. At the bottom of the *Colors* section, there are white, black, and several grays available. To use these colors:

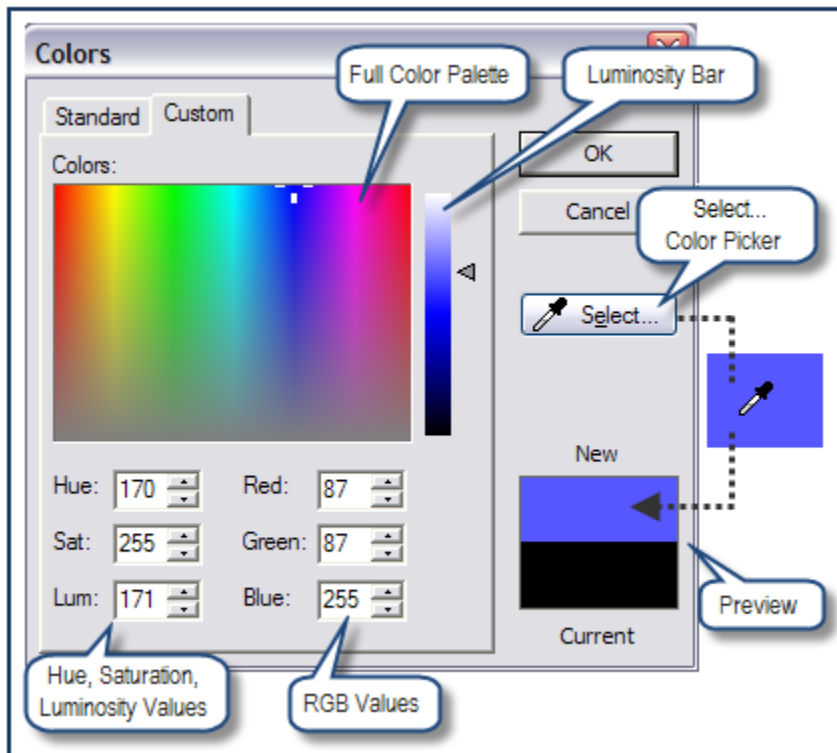
- *Click* on a color.
- View the color in the *New* color window.
- *Click* OK to apply the color.

Select color. Your cursor changes from an arrow into an eye dropper when you *click* on this button. This eye dropper allows you to capture a color that is already on the page or any color on the monitor. To use the *Select* color feature:

- *Click* the *Select* button and your mouse changes from an arrow into an eye dropper.
- Move the eye dropper until the tip of the dropper is over the color that you desire.
- *Click* over this color and check the *New* color window to see the color.
- *Click* OK to apply the color.

Colors dialog Custom tab

The *New* color window and *Select Color* commands are the same as the ones in the *Standard* tab. The difference is that the *Custom* tab gives you the ability to choose from a full range of colors and customize the colors that you want to use. When you combine the color (hue), brightness (luminosity), and the saturation of colors in different combinations, you have literally hundreds of colors to choose from in this dialog box. You can find colors by *clicking* in the color areas or entering the RGB (red, green, blue) values of known colors to get the exact color that you want.



Colors. The main color section contains a rainbow of colors. *Click* anywhere in the *Colors* area to choose a color from the full palette. The higher colors in the window are lighter and less saturated than the colors in the bottom of the window. *Click* in a vertical line along one color from top to bottom. Notice the difference in the *New* colors and the change in the values at the bottom of the dialog box.

Luminosity bar. Each time a color is selected, the *Luminosity* bar displays a range of that color from the lightest to the darkest. *Click* and *drag* the arrow on the side to move the bar up and down or *click* on any color within the bar.

Hue, Saturation, and Luminosity. These values are automatically filled in for the selected color. You can change these values to adjust the color. For instance, if you want to make the color a little brighter (increase the luminosity), change the number value in the *Lum* field.

Red, Green Blue. This area displays the *RGB* value of a color. If you know the *RGB* value of the color that you desire, fill in these fields to obtain that color.

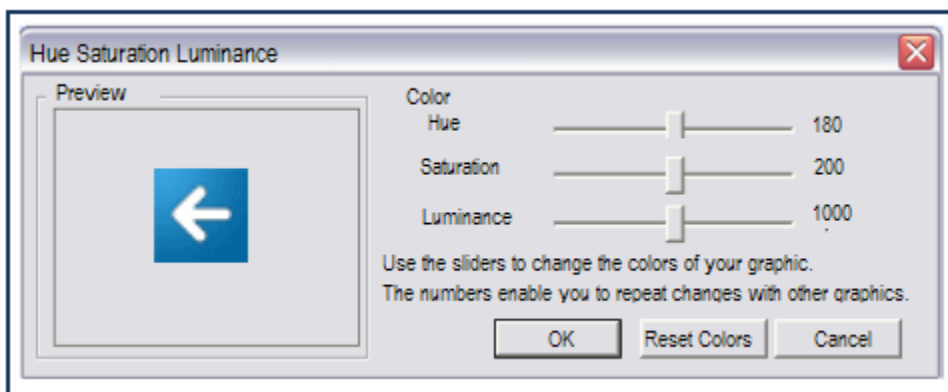
- Click on a color or enter the RGB values.
- Adjust the color by *clicking* in the color selection windows or by changing the values in the *Hue*, *Sat*, or *Lum* fields.
- View the color in the *New* color window.
- Click *OK* to apply the color to the object.

Using the Change Color Command

The *Change Colors* command in the *Create* tab allows you to change the *Hue*, *Luminosity*, and *Saturation* of graphic objects that were not created using the *Colors* dialog. You can use this command to change the color of one object or multiple objects on the page. For instance, you can *select* all of the graphic objects in a template and change all of them at the same time. This command does not work for black or white.

The *Change Color Command* does not change black or white. If your object has black or white plus another color, the color will change.

- *Select* the object or objects that you want to change. The first object that you *select* is displayed in the *Preview* pane of the dialog. Remember to hold down the *shift* key when making multiple selections.
- Click on *Create* > *Photos* > *Change Colors*. The *Hue Saturation Luminance* dialog opens.
- The graphic that you selected is displayed in the *Preview* pane. If you selected more than one graphic, the **first** one that you selected is in the pane.



- Begin to move the sliders to see the changes that you can make in *Hue, Saturation, and Luminance*.
- Look at the *Preview* pane to see the changes.
- Use the numbers to the right of the slider to repeat the values for other graphics.
- *Click Reset Colors* to return to the original color. *Click Cancel* to cancel the change and close the dialog.
- *Click OK* when you find a color that you want to use. The changes are applied to all of the graphics that you selected.



The changes to color are made in relation to the starting color. When you use the *Change Colors* command to change **multiple** objects, the objects will keep their differences in relation to each other. For example, the dark colored objects stay darker than the light colored objects. This also applies to the colors in individual graphics. All colors change relative to each other.

Using the Transparent Color commands

All web graphics are square or rectangle shaped. Transparency is a way to create the illusion of an irregular shape. Transparency allows one color to be set as transparent, usually the background color of the graphic.

Graphics and transparency

Graphic images on the internet are made of tiny little squares called pixels. When a graphic is created, regardless of the shape, it is made on a rectangular background. Some graphic backgrounds are transparent while others have a color such as white. The edges of the shape are made to blend in with the graphic's background to create the appearance of smooth, curved edges. When the background color is made transparent, the edges of the shape can appear jagged. This is called aliasing. The best way to prevent aliasing is to create the graphic in a dedicated graphics program such as PhotoShop or PaintShopPro.

However, you will frequently want to insert graphics that you did not make. If the graphic background color is not an exact match to the page, you can often use the graphic on a page with a similar color value. For instance, a graphic with a white background will look good on white or most light colored web pages when the white background is made transparent. Here is an example of how a graphic looks on a light colored page when the white background is made transparent.



Make a color transparent

There are three *Transparency* commands. *Select* the object before you use any of the commands.

Transparent. *Click* on this to make an object transparent so that things on lower layers can be seen.

Transparent White. *Click* on this to make any white in the object transparent.

Transparency Color. *Click* on this to choose a specific color to make transparent.

- *Select* a graphic object
- *Click* on *Draw > Fill Color*. At the bottom of the color window there are three transparency choices: *Transparent*, *Transparent White*, and *Transparency Color*.
- *Click* on *Transparency Color*. This opens the *Select Transparency Color* dialog.
- *Click* on the color that you want to make transparent. You will see the color that you choose in the *Transparent Color* window.
- *Click OK*. The chosen color is made transparent.

Using the Shapes Tools

The *Shape* commands in the *Draw* tab allow you to draw several shapes: rectangle, rounded rectangle, oval, and circle. The design commands in the *Draw* tab and *Create > Opacity* group can be applied to these shapes to create solid fill, graduated fill, borders, and transparency. There is a wide variety of shapes you can make when you use combinations of these commands.

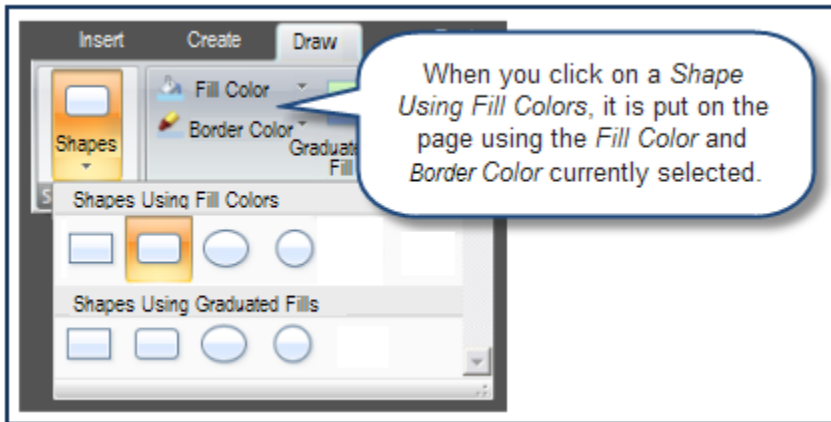
You create a rectangle, rounded rectangle, ellipse, or circle shape by *clicking* on a *Shapes* command. The shape is placed on the page with the color that was last used in the *Color* dialog. Once it is on the page, you can begin to apply the design commands to remove borders, reduce opacity, change color, change gradients, and much more.

Creating Solid Fill Shapes

All of the shapes have a fill color and a border color. You can choose to have a solid color fill or a gradual progression of colors called a graduated fill. The border around a shape can be any color, style, and width or removed altogether. You can *select* fill and border colors before you create a shape or change them anytime after the shape is on the page.

Create a solid fill rectangle, rounded rectangle, circle, or ellipse shape

- Click on *Draw > Shapes* group. This opens the *Shapes* selection.



- Select the shape that you want in the *Shapes Using Fill Colors* group.
- The shape is added to the page with the *Fill Color* and the *Line Color* that is currently selected in the *Colors* dialog.

You can *select* the *Fill Color* and the *Border Color* before you add a shape to the page or change the color after it is added.



You can easily switch between solid fill and graduated colors on all of the shapes.

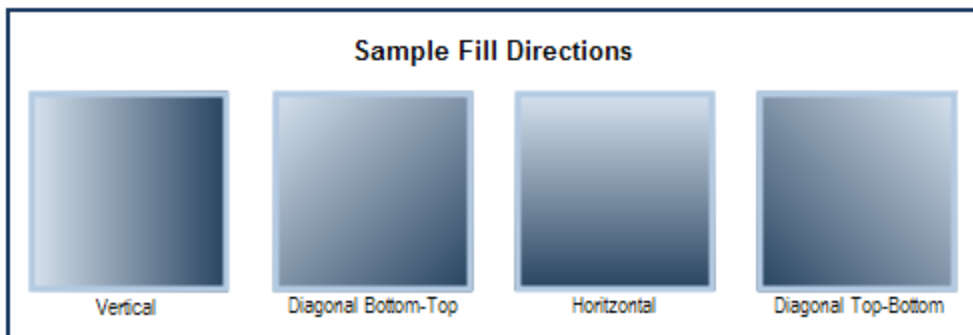
You can make a graduated color line by making a *Graduated Fill Rectangle* and resizing it to look like a line.

Choose the color of a solid fill shape

- If you have a shape that you want to change, *select* the shape first. If you are choosing the color first, go to the next step.
- *Click* on *Draw > Fill > Fill Color*. This opens the *Colors* dialog.
- Choose a basic color from the first window or *click Eyedropper & More*. In the next window, choose the color that you want on the *Standard* tab or mix your own color on the *Custom* tab.
- *Click OK* and the color fill the shape.

Creating Graduated Fill Shapes

The *Graduated Fill* commands give you the ability use unlimited colors for the start and end of the fill as well as 360° angle options for the direction of the fill. The *Start Color* and *End Color* commands open the *Color* dialog for color choices. The *Graduated Fill Studio* enables you to change the angle of the fill, choose colors, and view the choices before you apply them to a shape. You can set these colors before you create a *Graduated Fill* shape, or change the colors anytime after. You can even choose different fill directions.



Create a graduated fill shape

Graduated Fill shapes are made exactly like *Solid Fill* shapes. The difference is in the color selection. *Solid Fill* shapes can be changed to *Graduated Fill* and *Graduated Fill* can be changed to *Solid Fill* by using the commands in the *Colors* group.

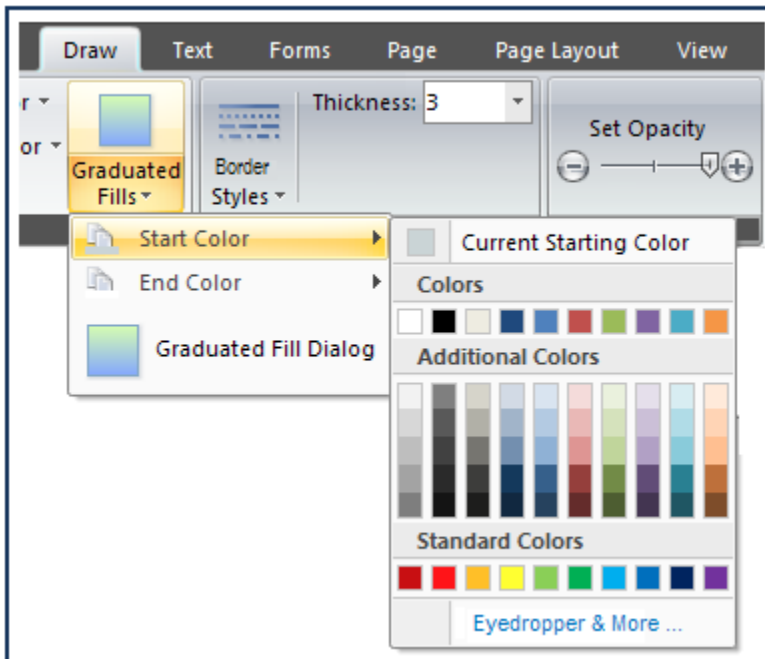
- *Click* on *Draw > Shapes* group. This opens the *Shapes* selection.
- *Select* the shape that you want in the *Shapes Using Graduated Fill* group.
- The shape is added to the page with the *Graduated Fill* colors currently selected in the *Start Color* and *End Color* dialogs.

Choose the graduated fill colors

- If you have a shape you want to fill, *select* it. If you are choosing colors first, go to the next step

Choose a Start Color

- *Click* on *Graduated Fills*>*Start Color* to choose a starting color for the graduated fill. This opens the *Color* dialog.



- *Click* to choose a color from the first window or *click Eyedropper & More* for more options.
- In the next window, choose the color that you want on the *Standard* tab or mix your own color on the *Custom* tab.
- *Click OK* to apply the color to the shape.

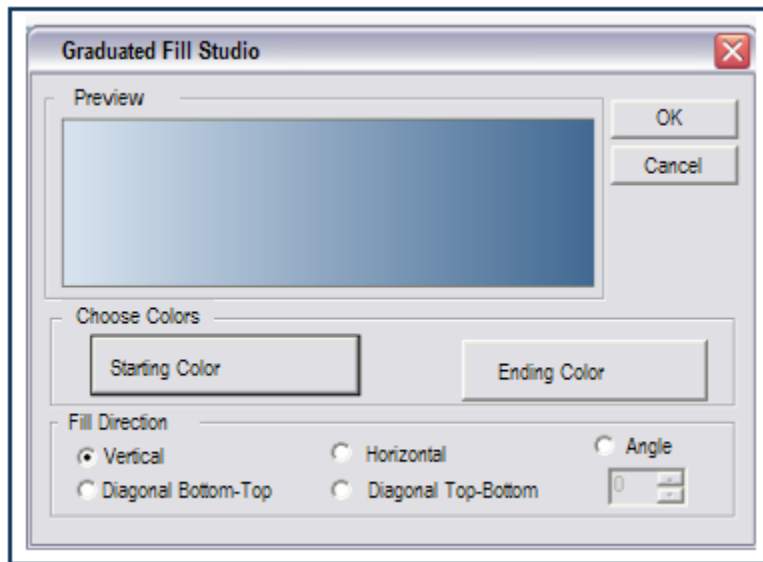
Choose an End Color

- *Click* on *Graduated Fills*>*End Color* choose an ending color for the graduated fill. This opens the *Color* dialog.
- *Click* to choose a color from the first window or *click Eyedropper & More* for more options.
- In the *Eyedropper & More* window, choose the color that you want on the *Standard* tab or mix your own color on the *Custom* tab.
- *Click OK* to apply the color to the shape.

Use the Graduated Fill Studio

The *Graduated Fill Dialog* command opens the *Graduated Fill Studio*. This studio provides you with options to choose fill colors and fill direction. The *Preview* window allows you to see the choices before you apply them. You can set these options before you *select* a shape or change the options on a shape after it is created.

- *Select* a shape.
- Click on the *Graduated Fills>Graduated Fills Dialog* command. This opens the *Graduated Fill Studio*.



- Choose options in the Studio

Preview. This window displays a sample of the choices that you make before you apply them to a shape.

Choose Colors. Click on *Starting Color* or *Ending Color* to change the colors in the fill.

Fill Direction. Click to change the direction of the fill. Choose from *Vertical*, *Horizontal*, *Diagonal Bottom-Top* or *Diagonal Top-Bottom*. See the *Sample Fill Directions* below. The *Angle* field allows you to set the direction by filling in a numeric angle degree from 0-360.

- Click *OK* when you are finished.

Placing Borders Around Shapes

The *Styles*, *Width*, and *Border Color* commands offer you a variety of border choices for solid fill and graduated fill shapes.

Border Styles: Solid, Dashed, Dotted, Dash Dot

Border Width: 1 pixel to 9 pixels, plus a *None* option to remove the border from a shape.

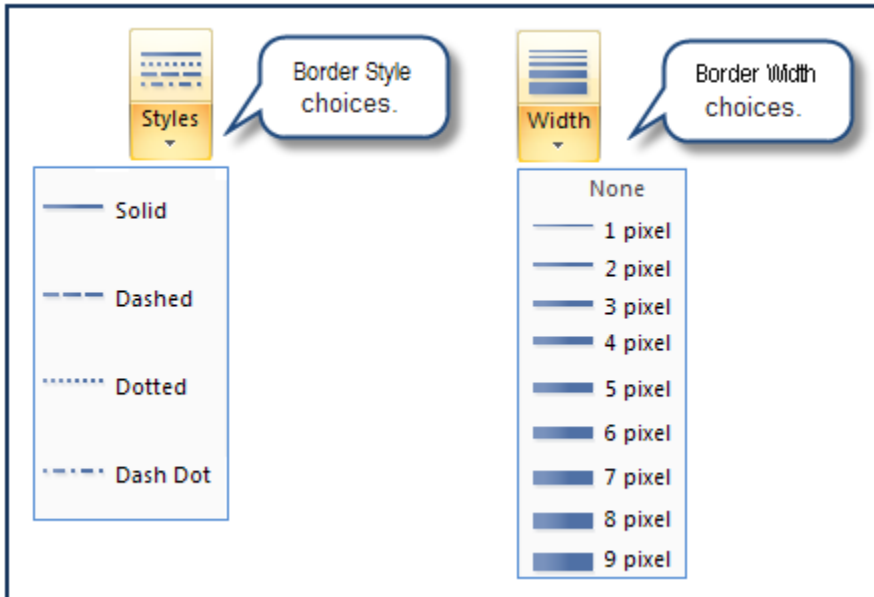
Border Color: The *Border Color* command enables you to use any color.



You can choose color, style, and width before you create a shape or anytime after.

Choose a border style and width

- If you have a shape, *select* it. If not, go to the next step to choose the style and width before you create the shape.
- Click on *Draw > Borders > Styles* or *Width*. This displays a drop down menu of choices.



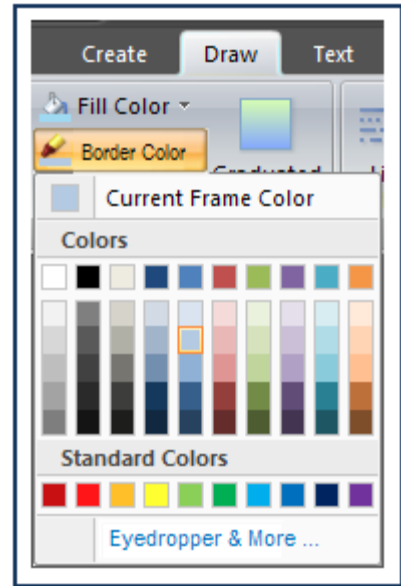
- *Select* the *Styles* and *Width* that you want.
- The selection is applied to the border.

Choose a border color

- If you have a shape that you want to change, *select* the shape first. If you are choosing the color first, go to the next step.
- Click on *Draw > Fill > Border Color*. This opens the *Colors* dialog.
- Choose a color from the first window or click *Eyedropper & More*. In the next window, choose the color that you want on the *Standard* tab or mix your own color on the *Custom* tab.
- Click *OK* and the border becomes that color.



If you do not see the border, it probably means that the *Border Width* is set to *None*. Click on *Draw > Border > Width*> choose a width.



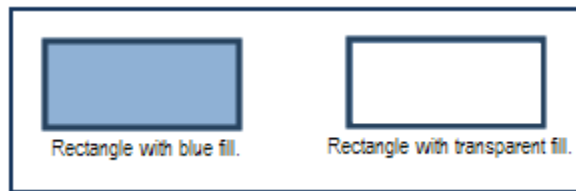
Remove a border from a shape

- *Select* the shape.
- Click on *Draw > Borders > Width*>*None*. The border is removed from the shape.

Create a border with transparent fill

Sometimes you want to use a border without a fill. This is useful when you want to outline a text object or create a box as a design feature.

- Click on *Draw > Shapes > Rectangle*. This places a rectangle shape on the page with the last used fill color. You can also use rounded rectangle, circle, or ellipse.
- Click on *Draw > Borders > Width*. Choose the width of the border that you want to have.
- Click on *Draw > Colors > Border Color*. Choose a color for the border.
- Click on *Draw > Colors > Fill Color*>*Transparent*. This removes the fill color and leaves you with a border.



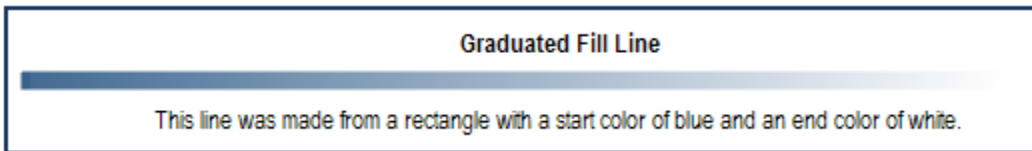
Drawing Lines

Lines are made from a rectangle shape that is resized to look like a line.

Create a line

- Click on *Draw > Shapes > Rectangle*. A rectangle is placed on the page.
- If you want to remove the border, click on *Draw > Borders > Width>None*.
- Use the selection handles to resize the rectangle to create a line.
- Use the *Colors* commands to change the color.

Create a graduated fill line

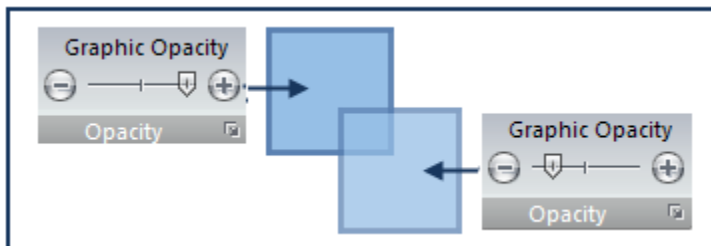


- Create a graduated fill rectangle.
- *Select* the rectangle.
- *Drag* the top, bottom, and side handles to resize it or hold down the *shift* key to use a corner handle for sizing in either direction.
- You can resize any rectangle to as small as 1 pixel.

Setting the Opacity

The *Set Opacity* command in the *Create* tab allows you to make any graphic or shape more or less transparent. This is a great design feature for your website. You can make a photo look like a “ghost” image to use behind text or make some objects transparent to overlap with other objects for a layered look.

- *Select* an object.
- Click on the *Create* tab and go to the *Opacity* group.
- Use the slider on the *Set Opacity* command to increase or decrease the opacity of the object.



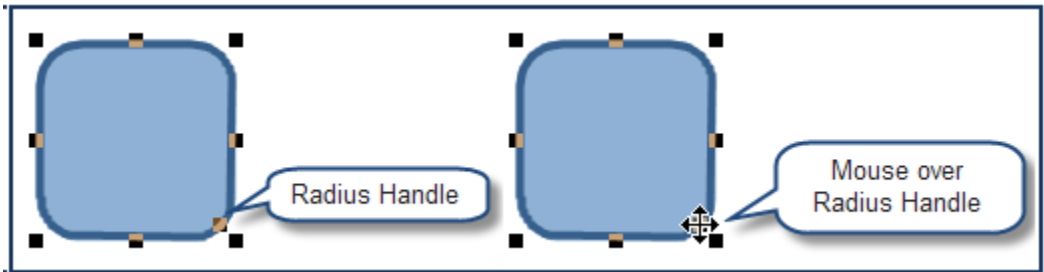
Editing Shapes

Shapes can be resized, aligned, spaced, and stacked just like any other objects. See *Working with Objects* for complete instructions.

Change the radius of the rounded rectangle

The rounded rectangle shape has an extra handle called the *Radius Handle*. You can use this handle to increase or decrease the amount of curve at the corners of the rectangle.

- *Click to select* the rounded rectangle. This causes the selection handles to be displayed. At the bottom of the right hand corner is the radius handle.
- Move your mouse over the radius handle until it becomes a cross.



- *Press* the mouse button and *drag* the handle diagonally to increase or decrease the curve.

Color Tip



The *Graphics Gallery* contains a sub-gallery of color swatches. These swatches can be used to create a color scheme for your website. *Drag and drop* the graphic from the gallery onto your page. It is small enough to keep on the page during design. Use the *Select* color eye dropper to choose colors that match the colors on the color scheme graphic.